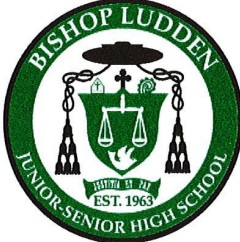


BISHOP LUDDEN

JUNIOR-SENIOR HIGH SCHOOL

The logo is circular with a green border. Inside the border, the text "BISHOP LUDDEN" is at the top and "JUNIOR-SENIOR HIGH SCHOOL" is at the bottom. The center features a shield with a scale of justice, a book, and a cross. Below the shield is a banner with the text "EST. 1969".

Dear Parents,

My name is Annibell Coolican and I am the director of recruitment for Bishop Ludden Jr/Sr High School. I would like to personally invite you to explore Bishop Ludden and all the opportunities we have to offer as you are deciding on your child's next step after elementary school. As you know, junior and senior high school becomes the central track toward college acceptance, scholarship potential, future readiness, and their ultimate success.

At Bishop Ludden, we focus on the growth of the whole person, which has allowed us to become one of the top private schools in New York State. We are called to provide a curriculum and school environment that fosters spiritual growth, moral development, academic excellence, critical thinking, and lifelong learning. Students thrive at Bishop Ludden because each is given individualized attention due to our small class sizes and dedicated teachers.

This year, we've enhanced our student focus with the addition of the International Baccalaureate (IB) Programme. To become an IB World School, schools must go through a two-year, rigorous application process. One thousand and seven hundred schools in the United States have been awarded this designation, with Bishop Ludden being one of just two schools awarded certification in the Syracuse area. Students who opt to complete this program benefit both academically and personally, reinforcing our commitment to educating the whole person. Some colleges allow entrance at a sophomore level.

Academics aside, you will also find here a close and connected community. I frequently hear comments from parents such as, "it's like a family" ... "kids watch out for one another" ... "no one sits on the sidelines" ... "my child feels like he belongs." Enclosed you'll find a parent perspective piece from a current Bishop Ludden parent that explains why her family ultimately chose Bishop Ludden.

If your student would like the opportunity to visit us, I would be more than happy to welcome you and your student with a tour of the school. Shadow Days offer students the chance to experience Bishop Ludden for a day, meet our teachers and other students, and see what possibilities our school holds. Please feel free to call me anytime at 315-579-0086 to discuss ways you can learn more about us, whether in-person or virtually.

Lastly, if you would like the chance for your child to earn an academic scholarship, I would be happy to schedule an exam date. Financial assistance is also available; the online application is due Feb. 15 and can be found on our website, BishopLudden.org. Please do not hesitate to reach out to me. I look forward to answering any questions you may have about Bishop Ludden.

Sincerely,

Annibell Coolican
Director of Recruitment
315-579-0086
acoolican@syrdiocese.org

Applicant Has: 504 Plan _____ IEP _____ * If N/A leave blank

Parish You Attend: _____

Race: _____ American Indian/Native Alaskan _____ Native Hawaiian Pacific Islander
_____ Asian _____ Biracial
_____ Black/African American _____ White

Ethnicity: Hispanic _____ Non-Hispanic _____

Religion: Catholic _____ Non-Catholic _____

Authorization to Release Records: Records such as Academic, Discipline, Testing, Psychological, Health, I.E.P, I.E.S.P, 504 Plans and other records necessary for consideration.

Textbook Request: I, the undersigned, request that my home school district loan to my child the textbooks required for his/her education and hereby authorize the principal of the school to act as my agent in the implementation of this request. I understand that all books loaned to my child are to be maintained in good condition and that said child will be responsible for the loss or excessive damage to these books.

Internet Agreement: As the parent/guardian of the student, I grant permission for my daughter/son to access networked computer services such as email and the internet. I have read and agree to the TERMS AND CONDITIONS.

Tuition: I have read and understand the tuition policy and payment policy for Bishop Ludden.

Publicity Consent and Release: Please check if you DO NOT want to grant permission.

_____ I DO NOT GRANT permission for the use of my child’s photo or any other information to be used for marketing/publicity for Bishop Ludden

This authorization/agreement shall remain in effect while my child is attending Bishop Ludden.

Parent/Guardian Signature: _____ Date: _____

Student name: _____ Current Grade: _____

Please Note: To fully process this application, the following items are required.

- Most Recent Report Card**
- Attendance Records**
- Discipline Records**
- State Test Scores**
- IEP/504 Information, if Applicable**

Tuition and fees for the 2021/2022 school year are as follows:

PARISH AFFILIATION RATE

	Grades 7 & 8	Grades 9-12
1st Child	\$7,400	\$8,450
2nd Child	\$7,100	\$8,150
3rd Child	\$6,800	\$7,850

NON-PARISH AFFILIATION RATE

Grades 7 & 8	Grades 9-12
\$8,400	\$9,450

PLEASE NOTE: IB test fees and AP test fees will be charged in November.

<p>Person Responsible for Payment of Tuition: must be completed</p> <p>Name: _____</p> <p>Address _____ City _____ State _____ Zip _____</p> <p>Employer's Name _____ Work Phone _____</p> <p>It is agreed that tuition will be paid as indicated in the Tuition Policy.</p> <p>Signature of person responsible for tuition _____</p> <p>Social Security # (Required) _____</p>

****Application Fee: \$30 cash or check** all application fees are non-refundable.

Parent/Guardian Signature: _____ Date: _____

Please return application & required fees to:

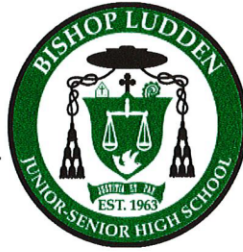
Bishop Ludden Jr-Sr. High School
Attn: Annibell Coolican
815 Fay Road
Syracuse, NY 13219

If you have any questions about the application or admissions process, please contact Director of Enrollment Annibell Coolican at acoolican@syrdiocese.org or (315) 468-2591 x 2209

This school is fully committed to fostering an educational community that is free from discrimination based on race, national origin, skin color, disabilities, age or gender, except as concerns any matter for which there is a statutory or judicially recognized exception for religious institutions.

BISHOP

JUNIOR-SENIOR



LUDDEN

HIGH SCHOOL

Dear Friends:

We are excited to share that Bishop Ludden is an official International Baccalaureate World School!

The International Baccalaureate (IB) Programme started 50 years ago, to meet the needs of families all over the world whose children changed schools frequently. In its original form, IB enabled a student in an IB school in one country seamlessly continue their education at an IB school in any OTHER country. The Diploma Programme (DP) offices are in Cardiff, Wales, and at first, participants were generally from families of international diplomats, professors, government officials, and corporate officers.

The philosophy and very high quality of the IB DP began to be noticed by families outside of those in international service. In the U.S., some states strongly backed the IB DP curriculum as a statewide standard. Now, any student in Florida who earns the IB Diploma is automatically awarded free tuition to any unit in the Florida state university system. Many other colleges and universities award credit, or even sophomore standing, to DP students that they admit.

The IB DP mission is very similar to the stated mission of Bishop Ludden: we strive to provide the tools and environment so that our students can grow to their full potential academically, personally, and spiritually, thus becoming fulfilled and responsible stewards of the Earth and its resources. The DP can be viewed as a structure, method, and environment by which our teachers/staff can think, act, and mentor in excellence, and inspire our students to excellence.

The IB DP is an exciting opportunity for our students as Bishop Ludden is one of only two schools in the Syracuse area to offer this Programme. As a comprehensive DP, students are given the opportunity to be in an environment which fosters growth and academic excellence. We look forward to providing your student with this opportunity, as they will have the tools to promote life-long learning.

Sincerely,

Heidi Busa
IB Coordinator

Discover the Difference Between AP and IB Classes

Advanced Placement and International Baccalaureate courses offer unique benefits to students, but have different educational goals.

By Alexandra Pannoni, Staff Writer



ADVANCED PLACEMENT courses have long been considered the go-to option for U.S. high schoolers who desire more challenging work than what's offered in the standard curriculum.

But students may have more options for getting an academic challenge. An increasing number of American high schools offer the International Baccalaureate program which, like the AP program, offers a rigorous set of courses.

The IB program is still relatively small compared with the AP program in the U.S.: only about 830 schools offer the IB diploma, according to the program's organizers. Nearly 14,000 public high schools offered AP courses during the 2012-2013 school year, according to the College Board, which administers the AP program.

"We see strengths in both programs," says Darren Bessett, honors program director at Fairview High School in Boulder, Colorado. His school offers IB and AP classes.

But both programs have their own distinct features. Read on to discover the differences between AP and IB classes.

- **The educational objectives differ:** AP courses tend to focus intensively on a particular subject, while IB courses take a more holistic approach.

"In an AP class, you may look very deeply at an issue and look at it from multiple perspectives," says Matthew Nelson, director of advanced academics for Metropolitan Nashville Public Schools in Tennessee.

"In IB, it would probably be more, still looking at an issue, but you may be looking at an issue over time and how it has impacted other parts of the world and how there is that connectivity to it all," he says.

Bessett's school in Colorado actually offers some classes that use the IB and AP curriculums together, which allows students to benefit from the strengths of both programs, he says.

- **IB students can earn an IB diploma:** High schoolers who have embraced IB's global educational philosophy can elect to earn an IB diploma, which is recognized by colleges around the world.

IB is primarily an international program – there are nearly 4,000 IB schools in close to 150 countries, according to the program's website.

Students take a standard set of courses and corresponding assessments in the rigorous two-year program, which they complete during their junior and senior year. There are other requirements, too, such as community service and a research paper, says Bessett.

"What's nice about IB and the diploma particularly, is you're saying, 'Hey, I'm willing to challenge myself in areas of strength, but I'm also willing to challenge myself in areas where I'm not as strong as well,'" he says.

But if students do not want to commit to the diploma program, they can pick and choose which IB courses they'd like to take, just like with AP classes, he says.

• **Students can earn college credit with either:** Both IB and AP classes culminate in an exam, and depending on the score, students may be able to earn college credit.

However, a student must be enrolled in an IB class to take an IB exam, Bessett says. This differs from the AP program, as students can take an AP exam without taking its corresponding AP course.

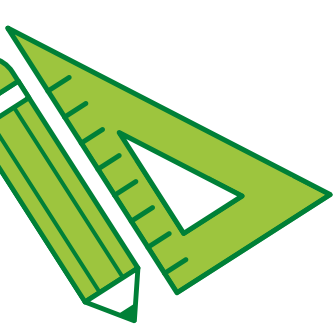
"If you are successful on the assessment, then it is invaluable in terms of how much money you save on college credit," says Nelson.

Both educators agree that they think college admissions officers look favorably on students who take either AP or IB classes.

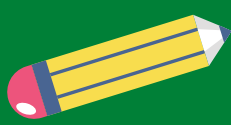
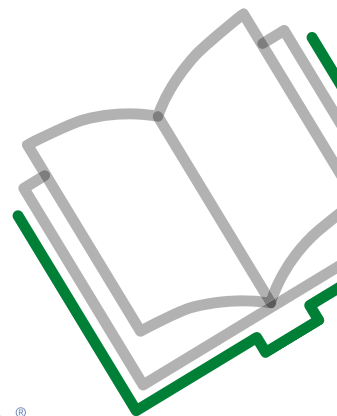
"It's always, where are you at as a student? What's your goal? What is your strength? What can we try to achieve by you taking this particular class?" says Bessett, in terms of deciding on AP or IB classes.

Bessett says that he doesn't advise students to take one course over the other – the students' choice depends on their academic goals. In some cases, a student may take an AP English class instead of the IB English class because of the type of literature the class is reading, he says.

Most students he advises take a combination of both, he says.



AP VS. IB



22,000 HIGH SCHOOLS IN THE U.S. OFFER AT LEAST 1 AP COURSE

OVER 1,700 SCHOOLS IN THE U.S. OFFER THE IB DIPLOMA PROGRAMME; ALMOST 7,000 PROGRAMS WORLDWIDE

1-YEAR COURSES, TAKEN AT ANY GRADE LEVEL BASED ON READINESS

COMPREHENSIVE TWO-YEAR CURRICULUM, CONVEYING GRADES 11-12

COURSE SPECIFIC, "A LA CARTE"

CURRICULUM INCLUDES COMMUNITY SERVICE REQUIREMENT, EXTENDED RESEARCH ESSAY AND THEORY OF KNOWLEDGE COURSE; OPTION TO CHOOSE INDIVIDUAL COURSES WITHIN FRAMEWORK

AP SCORES DETERMINED SOLELY ON EXAMS GRADED EXTERNALLY BY THE COLLEGE BOARD AP OFFICE; SCORES DETERMINED BY STATISTICAL DISTRIBUTION

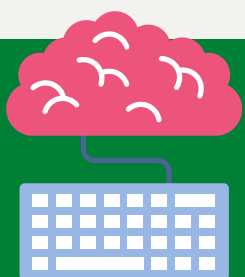
IB SCORES ARE A RESULT OF INTERNAL AND EXTERNAL ASSESSMENTS, BASED ON WRITTEN EXAMS, ORAL EXAMS, GUIDED COURSEWORK, PORTFOLIOS AND LAB EXPERIMENTS; SCORES MEASURED AGAINST AN EXTERNAL STANDARD, NOT BY COMPARING THE PERFORMANCE OF ONE STUDENT AGAINST ANOTHER

EXAM STRUCTURE IS LARGELY MULTIPLE CHOICE

EXAM STRUCTURE PRIMARY "AUTHENTIC ASSESSMENT" BASED ON STUDENT SKILLS AND DEMONSTRATION OF PERFORMANCE

CULMINATES IN INDIVIDUAL CREDIT HOURS

CULMINATES IN SECOND DIPLOMA





Bishop Ludden is recognized as one of the 30 Best Private High Schools in New York State, outside of New York City.

According to Niche



From Niche.com: The Best Private High Schools ranking is based on rigorous analysis of data from the U.S. Department of Education along with test scores, college data, and ratings collected from millions of Niche users. Additional data is also collected from schools directly. Factors considered include:

HIGH TEST SCORES Bishop Ludden students score well above average on SATs, earning an average score of 590 on the Reading/Writing portion and 540 on Math. In New York State, the average SAT score for Reading/Writing is 489 and the average for Math is 502.

COLLEGES THAT GRADUATES ATTEND Cornell, Boston University, Catholic U., Crouse School of Nursing, Keuka College, Le Moyne College, Mercyhurst University, Niagara University, RIT, St. Bonaventure, St. John Fisher, SUNY Albany, SUNY Canton, SUNY ESF, SUNY Morrisville, SU, Univ. of Rochester, Univ. of Michigan, Scranton Univ., Utica College and more!

COLLEGE ENROLLMENT At Bishop Ludden, 100% of seniors graduate and pursue higher education.

CULTURE & DIVERSITY Students come to Bishop Ludden from all over CNY. Our students live in almost 20 different public school districts.

PARENT & STUDENT SURVEYS

“As a senior at Bishop Ludden I love the small class sizes, friendly teachers and welcoming students. The school feels like home.”

“I love my Bishop Ludden family! The students are pushed academically and spiritually and I can’t imagine myself anywhere else.”

“Ludden helped me prepare so much for college. The workload that I received here was the exact same as my college workload. Also the safety of students, facility, and staff matters to the whole BL community.”

“This school will encourage your child and assist them in weighing their options for the future in order to achieve their goals. It is a family centered school with great traditions and encouraged values which are lacking in many youth today.”

“Counselors really care about student performance and success, as well as the mental health of the students.”

STUDENT-TEACHER RATIO

With an 11:1 student-teacher ratio, Ludden students get the attention they deserve.

Niche is the best place to research U.S. colleges, schools, neighborhoods, and companies. Every month millions of people use Niche easy-to-read and comprehensive reports cards, rankings, and reviews to choose the right schools for them. Niche does rigorous cleaning and analysis on large data sets, and combines them with feedback from our community for nuanced insight that cannot be found anywhere else.

A TYPICAL DAY AT BISHOP LUDDEN

7:45am-8am Arrive at School

Whether you arrive by bus, by car, or walk to school, students should be in the building by 8am.

8:00am-8:20am Homeroom

Homeroom is a time to do any homework left over from the night before, meet with teachers for extra help, or participate in clubs.

8:20am-2:45pm Class

There are 9 class periods in a day. Classes are 42 minutes each. Students have 3 minutes between classes to visit lockers. Classes are on a 2-day alternating schedule.

Day One

Day Two

	Day One	Day Two
8:20-9:02	Sager, M SKILLS	Avery, J HEALTH 7
9:05-9:47	Pietropaolo FRENCH IA	Pietropaolo FRENCH IA
9:50-10:32	Sudol, J SCIENCE 7	Sudol, J SCIENCE 7
10:35-11:00	Colabufo, S ENGLISH 7	Colabufo, S ENGLISH 7
11:00-11:17	Colabufo, S ENGLISH 7	Colabufo, S ENGLISH 7
11:20-11:45	McAuliffe LUNCH 7-9	McAuliffe LUNCH 7-9
11:48-12:02	Jamison, A CHORUS 7	Petrera, C PE 7-8 f
12:05-12:30	Jamison, A Chorus 7	Petrera, C PE 7-8 f
12:33-1:15	Dillon, S REL 7	Dillon, S REL 7
1:18-2:00	Allen, E SOC STUD 7	Allen, E SOC STUD 7
2:03-2:45	Fink, B MATH 7	Fink, B MATH 7



ACTIVITIES

Academic

Student Council
Student Ambassadors
Peer Ministry
Campus Ministers
Honor Society
Big Brothers/Big Sisters
STEM Club
Math League
Science Olympiad
MasterMinds
Double Down
CNY Rocket Challenge
Robotics
Chemistry Club
Girl Talk

Arts

Drama Club & Crew
Yearbook
Jr. High Choir
Senior Choir
Jr. High Band
Sr. High Band

Athletics

Soccer
Football
Cheerleading
Cross Country
Basketball
Ice Hockey
Indoor Track and Field
Volleyball
Baseball
Softball
Golf
Lacrosse
Track and Field

LANDS' END UNIFORM INFORMATION

BOYS

Regular Uniform:

Top

- Short or long sleeve green polo (with logo)
- White, light blue or light green button up (no logo required. Can be purchased from anywhere)
- Green blazer optional (with logo, optional)
- Under Armour ¼ zip optional (with logo. Available for purchase in the BL main office)

Bottom

- Khaki pants
- Khaki shorts

Solid socks

- Solid black
- Solid brown

Tie (optional)

Shoes

- Brown or black dress shoes



Dress Uniform: *In-school Mass days, days scheduled for public outings such as Mass at the Cathedral, Open House, or days at the discretion of the Principal*

White oxford with a tie, sweater (optional), khaki chino pants.

GIRLS & BOYS

Phys. Ed. Uniform: Grey short- or long-sleeve t-shirt and Black mesh shorts (both must include the Bishop Ludden transfer logo and must be purchased from Lands' End. Optional Under Armour phys. ed. shirts available for purchase in the main office). Gym socks and sneakers.

LANDS' END UNIFORM INFORMATION

All uniform pieces, with the exception of oxfords, shoes, socks, tights, and belts should be purchased through Bishop Ludden's exclusive vendor, Lands End

GIRLS

Regular Uniform

Top

- Short or long sleeve green polo (with logo)
- White, light blue or light green button up (no logo required. Can be purchased from anywhere)
- Green cardigan optional (with logo)
- Green sweater optional (with logo)
- Green blazer optional (with logo) • Under Armour ¼ zip optional (with logo. Available for purchase in the BL main office)

Bottom

- Khaki pants
- Khaki skort
- Plaid skirt or skort

Knee-high socks or tights

- Solid white
- Solid dark green

Tie (optional)

Shoes

- Brown/black dress shoes



Dress Uniform: *In-school Mass days, days scheduled for public outings such as Mass at the Cathedral, Open House, or days at the discretion of the Principal*

White oxford with or without a sweater and a tie, khaki pants, plaid skirt or skort, khaki skort.

CURRICULUM INFORMATION: GRADE 7

LIFE AND TIMES OF JESUS (RELIGION 7) - FULL YEAR

Religious Studies 7 is a journey through the New Testament, walking with Jesus and learning more about his life and message. Students develop a relationship with the Risen Christ in order to know and understand how much God loves them. In addition, students will explore the Scriptures to deepen their faith and become more adept at Biblical studies. Class retreat and 10 service hours required.

ENGLISH 7 - FULL YEAR

In this course, students will be exposed to a wide variety of texts in order to help them improve their reading ability, as well as to better understand the world around them. Additionally, students will write in many different formats in order to better understand how to organize, explain, and analyze in written format. Throughout all of this, students will work to improve their basic English skills so that they are more prepared as they transition from elementary school to the upper grades. Students will also be taking the English Language Arts Assessment at the end of their 7th grade year, as scheduled by New York State.

FRENCH IA - FULL YEAR

This is a basic course for any student who has little or no previous instruction in the language. The four basic skills of listening, speaking, reading, and writing are concurrently developed.

OR

SPANISH IA - FULL YEAR

This is a basic introductory course for any student who has little, some or no previous instruction in the language. The four basic skills of listening, speaking, reading, and writing are concurrently developed.

MATH 7 - FULL YEAR

This course has been realigned to meet the current New York State Common Core Standards. Performance indicators have been established in the following areas: Ratios, Proportions, Percents, Operations with Rational Numbers, Algebraic Expressions and Equations, Statistics and Probability, and Fundamentals of Geometry. Students will take the New York State Math 7 Common Core Assessment

GENERAL SCIENCE 7 - FULL YEAR

This course is focused on Life Science and includes scientific inquiry, living things, the human body, genetics and evolution, reproduction, ecology, and the earth. Students are also introduced to laboratory skills, including lab safety, equipment uses, dissections, data analysis and written laboratory reports.

SOCIAL STUDIES 7 - FULL YEAR

Year one of a two year curriculum sequence deals with the development of the United States with a focus on New York State. Topics include: first settlers in America, European exploration and colonization, the Revolutionary War period, the Constitution, and the historical development of our nation – 1800 to 1850's. Students will complete four research projects.

JUNIOR HIGH CHORUS - FULL YEAR, ALTERNATING DAYS

This course is open to all students in Grade 7 and Grade 8. Chorus 7, for 7th graders, and Chorus 8, for 8th graders meet separately but combine for all concerts. Participation in all performances is mandatory for course completion. Students will learn basics of sight singing and vocal technique. A variety of sacred and secular choral music will be explored. Jr. High Chorus performs in at least two concerts per year.

OR

JUNIOR HIGH BAND - FULL YEAR, ALTERNATING DAYS

The Junior High Band performs a wide range of musical styles, from transcriptions of early music to contemporary literature. Performances occur throughout the year. A public concert presentation each semester is mandatory to complete the course.

OR

GENERAL MUSIC - FULL YEAR, ALTERNATING DAYS

In General Music 7 students will be exposed to a wide array of music concepts. Music Theory concepts including notation, rhythm and melody will be explored and applied. In addition, music history, active listening and acoustics will be explored.

PHYSICAL EDUCATION 7 - FULL YEAR, ALTERNATING DAYS

At the 7/8 grade levels the emphasis will be on skill development, rules, body awareness and coordination, emotional control, and peer acceptance.

HEALTH 7 - FULL YEAR, ALTERNATING DAYS This course will explore current trends in health education. Topics discussed will include, but are not limited to: wellness with emphasis on the physical/social/mental and spiritual being, self-reflection of goals, values, and decision making, mental illness, nutrition and fitness, alcohol and drug usage. This course will be based largely on interpersonal learning.

LITERACY - FULL YEAR, ALTERNATING DAYS

This is a course for 7th grade students that assists them with their transition from elementary school to middle school. Often many students struggle with this transition and the Bishop Ludden Family wants to make this transition as easy as possible. Therefore, this course will help to reinforce skills learned in all classes, but will, in particular, focus on improving writing, speaking and communication. While focusing on these academic aspects of school, we will also work on time management, organization, using new technology, and communicating with teachers and peers. This course is not meant to be another English class; instead it is intended to be a space where students can ask questions about anything and gain skills to be the best people they can be reading and writing to improve their literacy skills.

COMPLETE CURRICULUM INFORMATION AVAILABLE ONLINE, AT WWW.BISHOPLUDDEN.ORG/APPS/PAGES/COUNSELING

Great Lakes Scrip Program



Do you shop at Target? Walmart? Amazon? JCPenney? Marshalls? Kohls? Barnes & Noble?

Do you eat at Applebees? Panera Bread? Cheesecake Factory? Subway? Dunkin' Donuts?

Are you planning a big home improvement project with Lowe's or Home Depot?

Are there vacation plans with Airbnb? American Airlines? Hilton Hotels? Carnival Cruise Lines? Disney?

SCRIP gives you the opportunity to earn credit towards your student's tuition when you make your normal purchases from hundreds of retailers.

So, how does it work?

Think of it as a gift card. When you purchase a SCRIP, you're purchasing a normal gift card to use just like cash. But, with every card you purchase, you're earning money back towards the cost of tuition at Ludden. Use SCRIP cards for groceries, clothing, gifts, gasoline, vacations and more! Extended family and friends can also order through your student, earning your family even more credit toward tuition!

How does buying a SCRIP generate revenue?

You order your SCRIP gift cards through the school and pay full face value for them. Bishop Ludden is able to buy SCRIP from hundreds of local and nationwide retailers through the Great Lakes Scrip Center at a discount. The discount, which varies from 1.5% to 25%, is returned to you as tuition credit for the following school year.

For example, if you purchase a \$50 gift card from a retailer that is offering a 10% discount, you have already saved \$5 on next year's tuition bill. (Land's End - our exclusive uniform vendor - offers a 15% credit back towards your tuition!) See the complete list of over 750 participating retailers at www.bishopludden.org/parents/great-lakes-scrip-program/

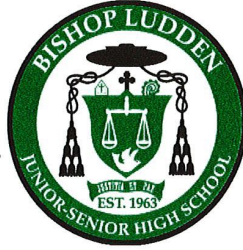
If you're planning a shopping trip to Target or a dinner at Cheesecake Factory, plan ahead and shop with SCRIP! Earn money back in the process -- it really adds up. Families have earned hundreds of dollars towards their tuition bills.

Participating retailers include:

A.C. Moore, Abercrombie & Fitch, Ace Hardware, Advance Auto Parts, Aerie, Airbnb, American Airlines, American Eagle, Apple App Store, Applebees, Barnes & Noble, Bath & Body Works, Bed Bath & Beyond, Best Buy, Blue Water Grill, Bonefish Grill, Bruegger's, Build-a-Bear, Carnival Cruise Lines, Carrabba's, Cheesecake Factory, Chipotle, Christmas Tree Shops, Cold Stone, CVS, Delta Air, Denny's, Dick's Sporting Goods, Disney, Double Tree, Dunkin' Donuts, Embassy Suites, Express, Famous Footwear, Finish Line, Foot Locker, Forever 21, Gap, Groupon.com, Guitar Center, Hilton, Home Depot, HomeGoods, Hotels.com, IHOP, iTunes, JCPenney, Jo-Ann Fabric, Kohl's, L.L.Bean, Land's End, Lowe's, Macy's, Marshalls, Michaels, Mobil, Nike, NOOK, Nordstrom Rack, Office Depot, Old Navy, Olive Garden, P.F. Changs, Panera Bread, PBteen, Petco, PetSmart, Pier 1 Imports, Pizza Hit, Pizzeria Uno, Popcorn Factory, OVC, Red Lobster, Regal Cinemas, Rite Aid, Royal Caribbean, Sam's Club, Sephora, Sling TV, Sirius XM Radio, Speedway, Staples, Stub Hub, SUBWAY, Sunoco, T.J. Maxx, Taco Bell, Talbots, Target, Texas Roadhouse TGI Friday's, Uber, ULTA, Walmart, Wendy's, White Barn Candle Co, Williams Sonoma, Zappos.com and more!

BISHOP

JUNIOR-SENIOR



LUDDEN

HIGH SCHOOL

ACADEMIC RECORDS RELEASE FORM

It is the responsibility of individual applicants to submit their academic records along with a completed application to satisfy admission requirements. Academic records include ALL of the following:

- Most recent report card
- Attendance records
- Discipline records
- State test scores
- 504/IEP information if applicable

If applicants have access to the above records through student/parent portals or in-home files, copies are acceptable forms of submission. If no such records are available, please use this form to request records from your student's current school.

By signing below, I am requesting my student _____'s records, including:
Student's Name

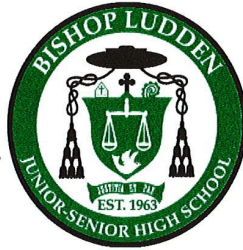
- Most recent report card
- Attendance records
- Discipline records
- State test scores
- 504/IEP information if applicable

Signature

Date

BISHOP

JUNIOR-SENIOR



LUDDEN

HIGH SCHOOL

TO: CATHOLIC SCHOOL FAMILIES

RE: SMART TUITION PAYMENT PLANS FOR 2020-2021

We are pleased to be working with SMART Tuition again for the 2020-2021 school year. Your family will continue to have online access to your SMART Account, with the ability to track your payments, as well as update any family information that might change throughout the year. SMART also offers the services of a 24-hour customer care center.

Important items to note:

- If your family was enrolled with a SMART Tuition account **through Bishop Ludden** last year (i.e. if your student has an older sibling at Bishop Ludden), you do not need to re-enroll with SMART. Your student will automatically be re-enrolled with the same payment plan as last year. However, if your family was enrolled with a SMART Tuition account through a different school (i.e. Holy Family, Most Holy Rosary, St. Margaret's St. Mary's, St. Rose, Cathedral Academy at Pompeii, Blessed Sacrament, Holy Cross or Immaculate Conception), you do need to re-enroll your student and create an account with Bishop Ludden.
- Please note that families who choose to pay their tuition in full at the start of the year are not charged a SMART administrative fee *and* receive a \$50 tuition discount.
- If you are a new family entering Bishop Ludden and have a student at an elementary school, you will need to register with SMART Tuition at Bishop Ludden, but SMART will refund the second administrative fee upon your request.

If you have any questions or concerns, please contact SMART Tuition's parent center at (888) 868-8828.



ROMAN CATHOLIC DIOCESE OF SYRACUSE

OFFICE OF THE SUPERINTENDENT

November 30, 2020

Dear Catholic School Parent,

RE: FINANCIAL AID FOR 2021 / 2022 SCHOOL YEAR
Deadline for 2021 / 2022--- Apply by FEBRUARY 15, 2021

2021/2022 FINANCIAL AID:
Deadline: February 15, 2021
Online.factsmgt.com/aid

FACTS Portal open 11/15/20

As more families are applying for financial aid and have reasonable expectations that aid will be awarded in a timely manner once their application and supporting documentation have been submitted, the Catholic School Office of the Syracuse Diocese has chosen to utilize FACTS Grant & Aid Assessment for 2021 / 2022.

For our 2021 / 2022 financial aid assessment process, we are partnering with FACTS Grant & Aid Assessment to conduct the financial need analysis and verification for the schools of our Diocese. We encourage families to apply on-line because on-line applications are able to be processed immediately by FACTS. To apply on-line visit online.factsmgt.com/aid. If you need assistance with applying on-line, please contact your SCHOOL. Each school will have paper applications available for those families who cannot apply on-line. FACTS Customer Care Representatives are available to assist you at 866.441.4639.

Our first and largest round of financial aid is TAP A, which is funded by HOPE APPEAL. In order to be eligible for TAP A awards, families will need to COMPLETE their financial aid application and submit their supporting documentation to FACTS Grant & Aid Assessment by FEBRUARY 15, 2021.

The processing fee for each application is \$35 per family. Once a parent applies, they can log into their FACTS account to check the status of their application, and FACTS will provide bi-weekly follow-up communication to parents if their application is incomplete. There is NO additional fee if parents have children in two or more schools of our Diocese. An incomplete application cannot be processed.

- *Financial aid is available to grades K-12 ONLY – we are unable to provide financial aid for PRE-K.*
- *In order to receive financial assistance – families must submit a completed FACTS application.*
- *Financial aid applications are required so that we can better allocate our tuition assistance to those who need it most.*


Supporting documentation can be scanned and uploaded or faxed (866.315.9264) to FACTS. Supporting documentation should include:

- Processing fee \$35.00 (if paying by check)
- Copies of parent's 2020 tax return if available, otherwise use 2019 – including all supporting tax schedules
- W-2's for the parent (and spouse if applicable) – W2 should match the tax return being submitted
- Copies of Social Security Income, Child Support, Food Stamps, Worker's Compensation and TANF (if applicable)

We look forward to working with FACTS once again as we partner to provide an outstanding educational experience for the children of the families of our Diocese.

Sincerely,

Principal



William Crist
Superintendent

